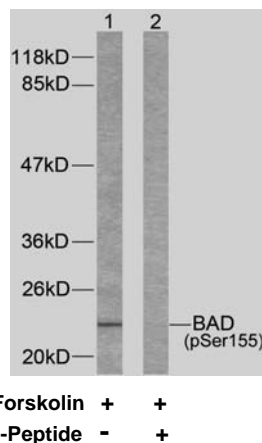


Rabbit anti BAD (pSer155)

- Catalog Number:** pAP11069
Amount: 100µl (for 10 Western Blotting)
Form of Antibody: Rabbit IgG in phosphate buffered saline (without Mg²⁺ and Ca²⁺), pH 7.4, 150mM NaCl, 0.02% sodium azide and 50% glycerol.
Storage/Stability: Store at -20°C/1 year
Immunogen: The antiserum was produced against synthesized phosphopeptide derived from human BAD around the phosphorylation site of serine 155 (R-M-S^P-D-E).
Purification: The antibody was affinity-purified from rabbit antiserum by affinity-chromatography using epitope-specific phosphopeptide. The antibody against non-phosphopeptide was removed by chromatography using non-phosphopeptide corresponding to the phosphorylation site.
Specificity/Sensitivity: BAD (phospho-Ser155) antibody detects endogenous levels of BAD only when phosphorylated at serine 155.
Reactivity: Human, Mouse, Rat
Applications: WB: 1:1000
Swiss-Prot No. : Q92934
References: Moon EY, et al. (2003). Blood.101(10): 4122-4130.



Western blot analysis of extracts from 293 cells using BAD (phospho-Ser155) antibody (pAP11069).

For Research Use Only

Contact & Ordering Information: Angio-Proteomie, 11 Park Drive, Suite 12, Boston, MA 02215, USA. Fax: (480) 247-4337, angioproteomie@gmail.com